

Thermostatic Cartridge

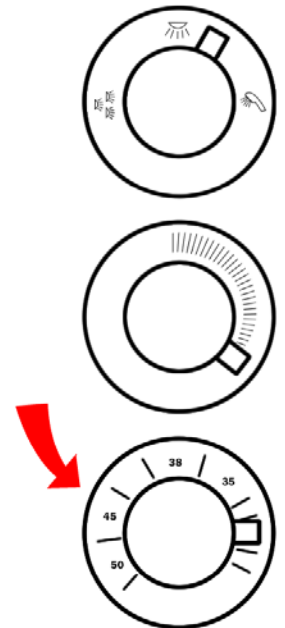
The following information is based on the removal of thermostatic cartridges compatible to the ones sold by steam shower spares and fitted to a large number of showers.

Please note we are unable to help you if the shower valve/thermostatic cartridge you have is not like the ones we are able to supply.

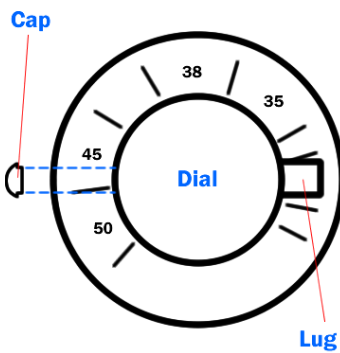
If your shower is fitted with a Thermostatic Cartridge and you need to remove or replace the cartridge for maintenance or replacement, follow the instructions below.

BEFORE STARTING ENSURE THAT THE WATER SUPPLIES ARE DISCONNECTED OR ISOLATED

It is imperative that the water supply to your shower is balanced with a pressure of between 1 and 3 bar as an imbalance will damage the Thermostatic Cartridge.



1.

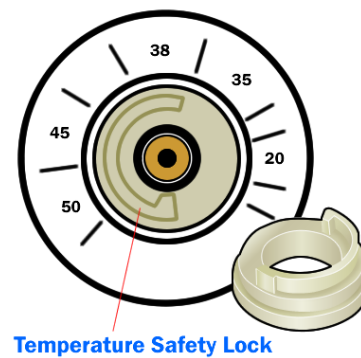


From inside the shower, on the **lower** of the three dials, remove the chrome coloured plastic cap that is fitted on the opposite side to the chrome lug.

The chrome cap will just pull off.

Keep the cap safe.

3.



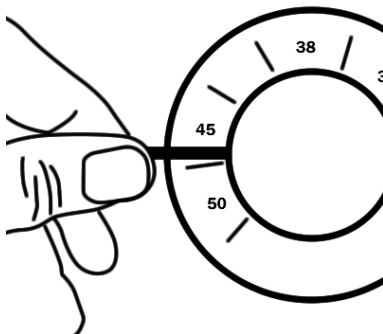
With the Chrome dial removed you will see a plastic ring covering with the Thermostat underneath.

Note down the position the ring is placed in.

Pull the plastic ring (Temperature safety lock) towards you to remove.

Keep this part safe

2.



Using a 4mm Alan key, insert this into the hole where the chrome cap was fitted and loosen the grub screw about 1 turn to loosen.

DO NOT UNSCREW FULLY—JUST LOOSEN.

Now remove the chrome dial.

Continued on next page...

If the Chrome Dial is stuck and will not remove easily, then you will need to apply some WD40 or similar solution into the dial, allow to soak in for a few minutes and then prise the chrome dial away.

BE CAREFUL NOT TO DAMAGE THE SURROUNDING AREA.

Q: I am having to turn the dial round as far as it will go to the hottest setting and the water is only just warm.

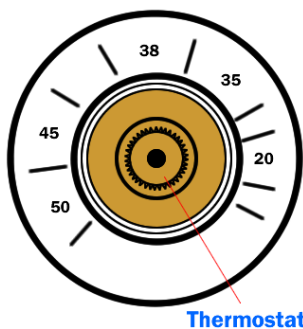
A: Your Thermostatic Cartridge has showed signs of failure. You will need to replace the Cartridge.

Q: Why did my Thermostatic Cartridge fail?

A: Un-balanced water pressures is the most common reason. If you have a Combi Boiler, then a Pressure Equalising Valve should have been fitted—this applies to ALL unbalanced water systems. Additionally Hard Water areas will result in calcification, which will build up in the Cartridge. Other reasons might be age of the Cartridge or even dirt or debris collecting in the Cartridge from the pipes.

...continued from previous page

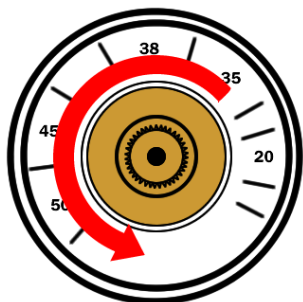
4.



You will now see the head of the Thermostat clearly visible.

If your shower or Valve was supplied AFTER January 2011 then continue to remove the thermostatic cartridge as detailed below (5). If it unscrews, then it is likely to be a TYPE 8 if it matches the image at the bottom of the page. For showers and valves supplied PRE January 2011, then please follow the instructions opposite (6).

5.



Using a pair of Pipe Grips or similar tool, grip the head of the Thermostat and turn counter-clockwise to remove.

To fit your new Thermostat, simply reverse this process.

If your thermostatic cartridge has residue of Limescale, then we would advise that you take precautions to prevent this happening as it WILL impair the cartridge and reduce its lifespan considerably.



TYPE 8 Thermostatic Cartridge
Threaded Type

PRE-JANUARY 2011 SHOWER VALVES

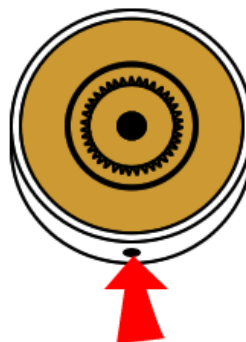
6.



Unscrew the chrome temperature dial plate. This is the item with the temperature marking on.

If this part does not remove easily, then you will need to gain access BEHIND the shower and loosen the nut behind the lower dial. This will allow a small amount of movement to the tower section, enough to enable the dial to be removed. **Do NOT forget to tighten it up after.**

7.



With the chrome dial plate removed, look at the chrome surround to the thermostatic cartridge in the lowest position and look for a small hole.

If there is a hole, then remove the GRUB SCREW that hold the thermostat in place — DO NOT LOOSE THIS PART!

Once you have removed the Grub Screw, simply grip the head of the thermostatic cartridge and PULL. It is held in place with rubber O Rings and may require firm but careful pulling.

If there is NO HOLE located as above, then refer to Section 5 for removal.



TYPE 6 Thermostatic Cartridge



TYPE 12 Thermostatic Cartridge

The Cartridges above are both PUSH FIT type and are held in with a Grub Screw.

Steam Shower Spares provides this information in good faith for the removal of compatible thermostatic cartridges, we will not be held responsible for damage caused though following these instructions.